

ElectraPak II CD22QD



Operating Manual

CVC Incorporated - Galaxie LP
16-18 Ballard Road
Lawrence MA 01843
(800) 238-2295
www.mycentralvacuum.com

ElectraPak II

CT22QD

Premium Electric Power Brush

This power brush is used to vacuum carpets. It has a 14" edge to edge brush head to create a wider cleaning path. It is to be used with the integrated telescopic wand.



Features include:

- Quietdrive™ V-Belt - multi-grooved reinforced belt for continuous contact and efficient transfer of power to the brush.
- Quick Wand Release - for an easy switch from carpet to hard floor, edge cleaning, or above floor cleaning.
- 4-Level Height Adjustment - adjusts to match surface being cleaned.
- Soft Bumper - wraps around brush to protect baseboards and furniture.
- Headlight - for lighting your cleaning path
- Active Brush Edge Cleaner - guide either side of the brush along base boards or next to furniture to help remove dirt trapped at carpet edges.

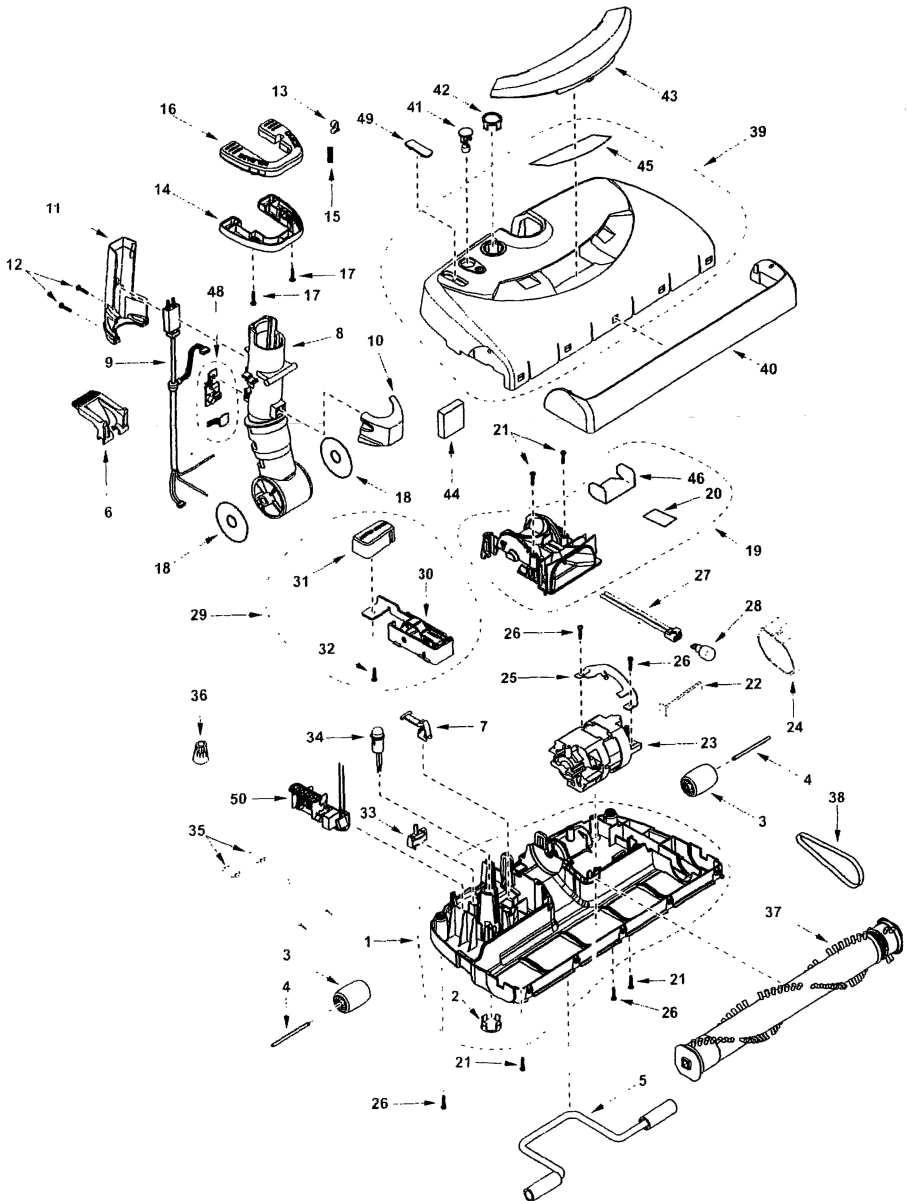
Safety Instructions

Please read all instructions before using this Electric Powerhead.

WARNING: Electric shock could occur if used out of doors or on wet surfaces.

1. Unplug and disconnect power before servicing
2. Always turn off this appliance before connecting or disconnecting either hose or motorized device.
3. Do not pick up anything that is burning or smoking, such as cigarettes, matches or hot ashes.
4. Use only as described in this manual. Use only manufacturer's recommended attachments.
5. Do not unplug by pulling on the cord. To unplug, grasp plug, not cord.
6. Do not handle system or appliances with wet hands
7. Turn off all controls before unplugging.
8. Do not use with damaged cord or plug. If appliance is not working as it should, has been dropped, damaged, left outdoors, or dropped into water, return it to distributor.
9. Do not allow to be used as a toy. Close attention is necessary when used by or near small children.
10. The hose contains electrical wires. Do not use if damaged, cut or punctured. Avoid picking up sharp objects.
11. Do not put any object into openings.
12. Do not use with any opening blocked. Keep free of dust, lint, hair and anything else that may reduce air flow.
13. Keep hair, loose clothing, fingers, and all parts of the body away from openings and moving parts.
14. Do not leave vacuum or brush when plugged in. Unplug from outlet when not in use and before servicing.
15. Do not pick up flammable or combustible liquids such as gasoline, or use in areas where they may be present.
16. Use extra care when cleaning stairs.

ElectraPak II CT22QD Parts



ElectraPak II CT22QD Parts

<u>Item</u>	<u>Part No.</u>	<u>Description</u>	<u>Quantity</u>	<u>Remarks</u>
1	37154	Floor Nozzle Lower	1	includes item 2
2	37165	Window Height Adjust	1	
3	37176	Nozzle Roller	2	
4	37187	Roller Shaft	2	
5	40427	Front Axle Assy	1	
6	37198	Pedal / Handle Release	1	
7	40625	Lifter	1	
8	37209	Nozzle Pipe Swivel	1	
9	37220	Lead Wire "A" Unit	1	
10	41186	Front Cover	1	
11	41153	Rear Cover	1	
12	41208	Screw	2	
13	56366	Press Lever Quick Release	1	
14	37242	Foot Pedal Lower Quick Release	1	
15	56388	Pedal Spring Left	1	
16	37253	Foot Pedal Upper Quick Release	1	
17	56306	Screw	2	
18	40383	Swivel Seal (2)	2	
19	37286	Swivel Cap	1	includes items 20, 46
20	37297	Reflector Nozzle	1	
21	37308	Screw, Pan Hd #8-18 X 35Mm	4	
22	40284	Mtr Adjustment Spring	1	
23	37319	Motor Assembly	1	
24	56058	Motor Gasket	1	
25	40317	Motor Bridge	1	
26	40944	Scr Thdcut No8-18X5/8	2	
27	37330	Bulb Socket	1	
28	37341	Light Bulb	1	
29	37352	Indicator Block Assy	1	includes items 30,31,32
30	37363	Indicator Block	1	
31	55959	Screw	1	
33	56014	Overload Protector	1	
34	56179	Bulb Unit Belt Reset	1	
35	41120	Black Lead Wire Unit	2	
36	56190	Wire Connector	4	
37	41605A	Agitator Unit	1	
38	40999	Belt	1	
39	37429	Floor Nozzle Upper	1	includes items 41,42,43,45
40	37440	Furniture Guard	1	
41	37451	Button Belt Reset	1	
45	37462	Reflector Nozzle Upper	1	
42	37473	Window Height Adjust	1	
43	37484	Window Nozzle Light	1	
44	40823	Filter-Intake/Exhaust	1	
46	37495	Reflector, Swivel Cap	1	