

OWNER'S MANUAL



Read Manual Before Operating System

To The Owner:

Read the owner's manual thoroughly to ensure the most efficient use of your Sweep Away Cabinet Vac System



Electric Shock could occur if used on wet surfaces

DO NOT USE ON WET RUG OR FLOOR!

Please be sure this manual / installation information is left with the power unit or customer when installation is completed.

IMPORTANT SAFETY INSTRUCTIONS

READ ALL INSTRUCTIONS BEFORE USING THIS VACUUM SYSTEM



When using an electrical appliance, basic precautions should always be followed, including the following:

To reduce the risk of fire, electric shock or injury:

- Unplug and disconnect power before servicing.
- Electric shock could occur if used on wet surfaces.
- Do not allow to be used as a toy. Close attention is necessary when used by or near children.
- Use only as described in this manual. Use only manufacturers recommend attachments.
- Do not use damaged cord or plug. If appliance is not working as it should, has been dropped, damaged, left outdoors, or dropped into water, return it to a service center.
- Do not pull or carry by the cord, use cord as a handle, close door on cord, or pull around sharp edges or corners. Do not run appliance over cord. Keep cord away from heated surfaces.
- Do not unplug by pulling on cord. To unplug, grasp the plug, not the cord.
- Do not handle system or appliance with wet hands.
- Do not put any object into openings.
- Do not use with any opening blocked; keep free of dust, lint, hair, and anything that may reduce air flow.
- Keep hair, loose clothing, fingers, and all parts of body away from openings and moving parts
- Do not use without dustbag and/ or filters in place.
- Do not pick up anything that is burning or smoking, such as cigarettes, matches, or hot ashes.
- Connect to a properly grounded outlet. See grounding instructions.
- Turn off all controls before unplugging.
- Use extra care when cleaning on stairs.
- Do not use to pick up flammable or combustible liquids such as gasoline or use in areas where they may be present.
- To reduce the risk of electric shock do not use on wet surfaces.
- To reduce the risk of injury from moving parts unplug before servicing.

GROUNDING INSTRUCTIONS

This appliance must be grounded. If it should malfunction or break down, grounding provides a path of least resistance for electric current to reduce the risk of electric shock. This appliance is equipped with a cord having an equipment grounding conductor and grounding plug. The plug must be plugged into an appropriate outlet that is properly installed and grounded in accordance with all local codes and ordinances.

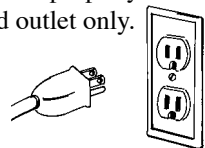
WARNING

Improper connection of the equipment grounding conductor can result in a risk of electric shock. Check with a qualified electrician or service person if you are in doubt as to whether the outlet is properly grounded. Do not modify the plug provided with the appliance- if it will not fit the outlet, have a proper outlet installed by a qualified electrician.

The Sweep Away Cabinet Vac appliance is for use on a nominal 120 volt circuit and has a grounding plug that looks like the plug illustrated in Fig. A.

Make sure that the appliance is connected to an outlet having the same configuration as the plug. No adapter should be used with this appliance.

Connect to a properly grounded outlet only.



Sweep Away Operating Instructions

Activating Automatic Dustpan

A touch of your toe to the easy-flip switch on the front of the VacPan activates the automatic dust pan. Then just sweep debris into the VacPan.



Inserting optional hose into valve

(Fig. A) Pull lid down on valve. Insert hose into valve and power unit will turn on. Connect desired attachment and you are ready to vacuum.

NOTE:

If SweepAway is to be used as a central vacuum only, follow installation instructions 1 -6a Only. See page 4, #6a.

(Fig A.)



Changing Bag

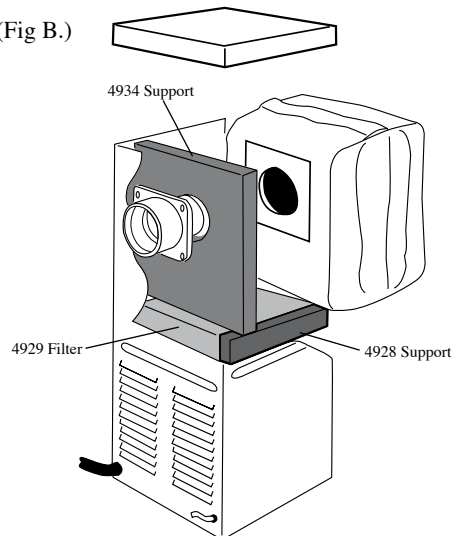
To keep your Sweep Away at top efficiency, change the filter bag at regular intervals. Since cleaning schedules differ, check frequently in the beginning to determine proper interval. To maintain cleanability, replace filter bag when it is 2/3 to 3/4 full.

(Fig A1.)



To Change the Filter Bag (Fig A1.) Locate unit, lift lid, and pull bag collar off connector. Open new bag, (EXPAND PLEATS BY GENTLY PULLING ON BAG). Slide collar securely onto inlet connector. (See Fig. B.) Replace with Bag #1000

(Fig B.)



To remove Secondary #4929 Filter & #4928/4934 Filter Supports for Cleaning (Fig. B) Take out Bag 1000, pull Support 4934 off connector and out of canister. Take out 4929 & 4928. For reassembly, follow instructions in reverse order. NOTE: 4929 Filter wraps to front of 4928 (Fig. B).

NOTE:

This appliance has a Thermal Protector built into the motor to prevent overheating. If motor will not operate, pull power cord plug out of receptacle, reinsert to reset.

If motor brushes or bearings are worn out, the thermal protector will trip off again after a short period of time. If this happens, service for this and any other servicing should be performed by an authorized service representative.

To reorder, see your local authorized SweepAway dealer and ask for bag #1000

Or contact
CVC Incorporated
16-18 Ballard Road
Lawrence, Massachusetts 01843
1-800-238-2294

SWEEP AWAY INSTALLATION INSTRUCTIONS



WARNING

This unit must be installed in an accessible area with proper ventilation.

TOOLS REQUIRED FOR INSTALLATION

- Drill
- Keyhole or Reciprocating Saw
- 2 1/2" Hole Saw
- 1/8" Drill Bit
- Phillips Screw Driver
- Standard Screw Driver
- Wire Strippers
- Tape Measure

1. Select a location in a cabinet near a grounded electrical receptacle for easy plug-in connection of motor cord. Route cord so that it doesn't rest against sharp edges or pinch point. Unit requires a 120 volt electrical receptacle. See grounding instructions on page 2.



2. Measure distance between floor and base of cabinet to ensure proper amount of space is available for installation. 3 1/2" is the minimum space required to install vacpan.



3. Place unit in desired cabinet to check for proper clearance of plumbing pipes, electrical outlets, and other items that could impede the installation.



4. Each unit is designed to be mounted on either side of a cabinet; a left designated unit can be mounted with the wide shelf to the left or the narrow side to the right and vice versa for a right designated unit.

5. Check proper clearance of cabinet door hinges and / or face frame of cabinet.

Use 1" x 2" spacer (provided) if needed to allow for proper removal of bag cover.



5a. If spacer is required, mount spacer to flange on unit shelf using the (2) 1/2" screws that are provided. Position unit allowing for proper clearance to remove unit cover.



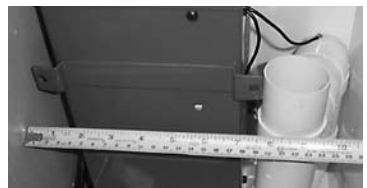
6. Once proper location is determined, mark screw holes on the base of the cabinet.



6a. *Glue End Cap, Part # FPC, to Intake at rear of unit, as shown right, with PVC cement ONLY IF SweepAway is to be used as a Central Vacuum.*



7. Measure distance from the side wall of the cabinet to the intake pipe on the back of the unit.



8. Remove unit from cabinet.

9. Using a 1/8" drill bit, drill marked locations for screw holes in the base of the cabinet.



10. Drill a 2 1/2" hole in the floor of the cabinet approximately the same distance off the side wall of the cabinet and directly behind the unit. Use the measurement you took in Fig.7.



Note:

The vacpan can be installed in the toe kick of the cabinet without using the trim plate, by gaining access through the cabinet floor.

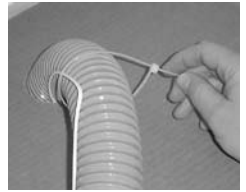
Do Not cut slot for vacpan until reviewing page 6 for details!

11. Vacpan requires a minimum of 3 1/2" toe kick height.

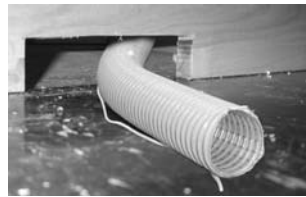
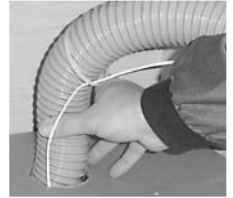
12. On the toe kick of the cabinet, mark and cut out a 6 3/4" long and a 3 1/2" high slot.



13. Attach low voltage wire along flex hose with wire tie wraps (3) provided.



14. Feed flex hose through hole drilled in step # 10 through slot in toe kick.



15. Attach flex hose to spigot adapter and fasten with hose clamp provided.



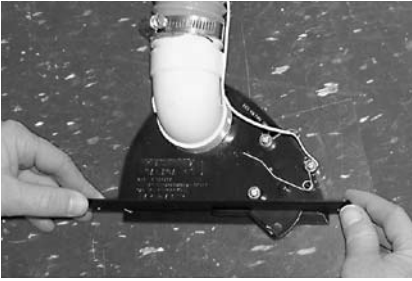
15a. Attach universal 90 degree elbow to vacpan.



15b. Strip wire ends and connect the low voltage wire to the vacpan using the terminals marked "low voltage only".



- 16.** Slide vacpan into mounting slot with vacpan trim plate.



Then screw to toe kick with # 6 screws provided.



- 17.** Attach other end of flex hose to intake of unit using hose clamp provided.



- 18.** Place unit into cabinet, screw bottom into predrilled holes using 1/2" screws provided. Level top unit and screw into side wall of cabinet using 3/4" screws provided.



- 19.** Plug into a 120 volt electrical receptacle and unit is ready for use.

Note:

Installation Without Faceplate

On the toe kick of the cabinet, mark and cut out a 6 3/4" x 1/34" high slot.



The vacpan can be installed in the toe kick of the cabinet without using the trim plate, by gaining access through the cabinet floor. Cut a 2 3/4" x 3 1/2" access hole 6" from the face of the cabinet to the front edge of the access hole.

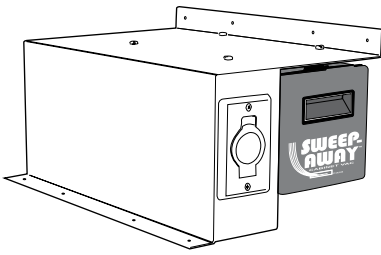


Connect the low voltage wire through the slot in the toe kick, up through the hole drilled in step #10.

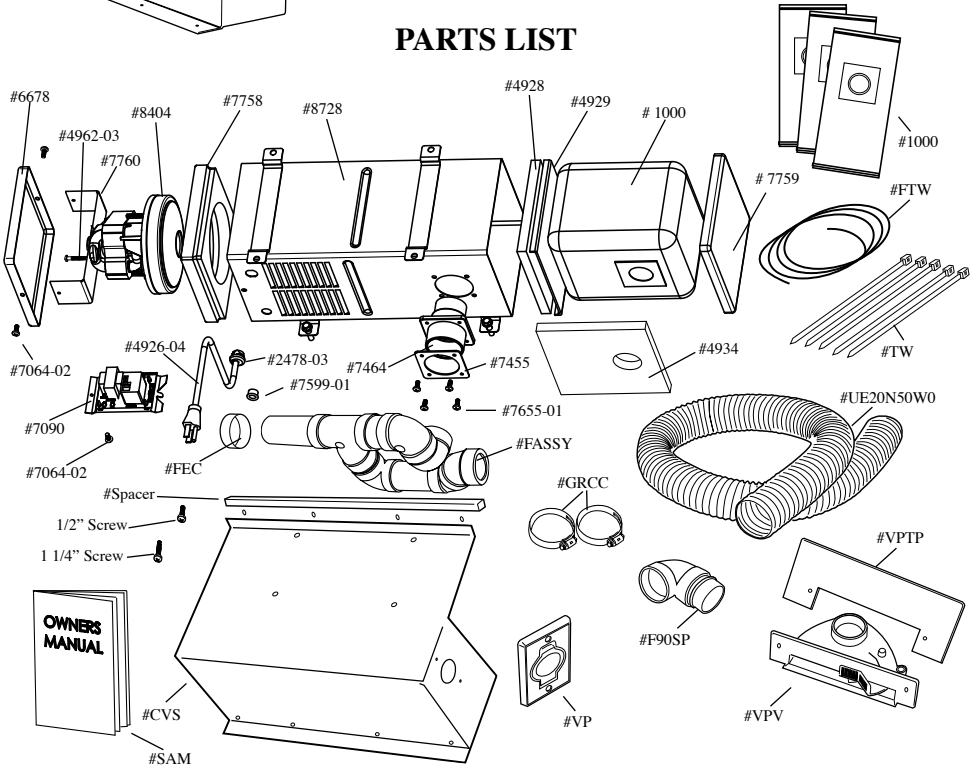


Use the access hole to feed the wire. Screw the vacpan into place. Connect the flex hose to the 90 degree spigot adapter and fasten with hose clamp. Feed attached elbow and flex hose through hole drilled in step #10 to the front of the cabinet. Through the access hole, attach 90 degree Spigot Adapter to vacpan.

Attach other end of flex hose to the intake of unit, and attach low voltage wires at unit, and anchor unit as described in steps #17 and #18. Plug into a 120 volt electrical receptacle and unit is ready for use.



PARTS LIST



Part #	Description	Part #	Description
7759	Top Cover Assembly	7090	Relay Assembly
1000	3 Pack Bags	7064-02	Screw (3)
4934	Filter Support w/Hole	4962-03	Screw (1)
4929	Filter	6678	Bottom Cover
4928	Filter Support	7760	Motor Bracket
7464	Inlet Connector Assembly	8404	Motor
7455	Gasket	7758	Motor Gasket
7655-01	Screws (4)	VPV	Vacpan
8728	Canister	GRCC	Hose Clamp (2)
2478-03	Bushing	VPTP	Trim Plate
7599-01	Bushing	UE20N50W0	Flex Hose
4926-04	Cord	CVS	Cabinet Vac Shelf
SAM	Manual	FASSY	Fittings Assembly
F90SP	90 Degree Spigot Adapter	VP	Inlet VALVE
FEC	End Cap	FTW	Low Voltage Wire
Spacer	Spacer: 3/4" x 1 1/2" x 18"	Screw	1 1/4" Screw (2)
Screw	1/2" Screw (6)	TW	Wire Tie Wraps (5)

LIMITED WARRANTY

Your SWEEP AWAY which has been manufactured and inspected in accordance with carefully specified engineering requirements, is warranted to be free from defects in materials and workmanship for three years. This warranty is however, subject to the following qualifications, conditions and limitations which are set forth to provide users of CVC Incorporated / Galaxie Central Vacuum products with information concerning the duration, extent, availability and applicability of this SWEEP AWAY Limited Warranty, the procedure to be taken for warranty work and other information concerning the SWEEP AWAY warranty policy.

DURATION OF WARRANTY AND TO WHOM EXTENDED

CVC Incorporated / Galaxie Central Vacuum Systems warrants to the original customer, the SWEEP AWAY equipment and accessories manufactured or supplied by CVC Incorporated / Galaxie Central Vacuum Systems to be free from defects in material and workmanship under normal use and when properly installed and operated, for a period of three years from the date of purchase by the original purchaser.

EXCEPTIONS AND LIMITATIONS ON WARRANTY

Defects, malfunctions, failures or damage caused by improper use or repair while warranted parts are in the possession of the consumer are excluded from the warranty. The warranty does not cover unauthorized repair of the motor assembly.

IMPLIED WARRANTY OF MERCHANDISE FOR A PARTICULAR PURPOSE ARE LIMITED TO A PERIOD OF THREE (3) YEARS FROM THE DATE OF PURCHASE BY THE ORIGINAL CONSUMER.

Some states do not allow limitations on how long an implied warranty lasts, so the above limitation may be void where prohibited by law.

WE NEITHER ASSUME NOR AUTHORIZE ANY PERSON TO ASSUME FOR US ANY LIABILITY IN CONNECTION WITH THE SALE OR SERVICE OF THIS SWEEP AWAY EQUIPMENT OTHER THAN HEREIN ABOVE PROVIDED.

PROCEDURE TO BE TAKEN FOR WARRANTY WORK

To secure repair of any warranted parts under this warranty, the following procedure should be taken:

The warranted parts, together with satisfactory evidence of the purchase date, must be delivered, with shipping and delivery charges prepaid, to one of the following: (1) the Distributor/Dealer from whom purchased; or (2) CVC Incorporated/Galaxie Central Vacuum Systems, 16-18 Ballard Road, Lawrence, Massachusetts 01843.

Upon compliance with the above procedure CVC Incorporated/Galaxie Central Vacuum Systems will repair or replace, at its option, any warranted part which is defective. Such part or parts will be furnished without cost F.O.B. place of shipment. Return shipment will be made freight collect. All costs for service calls shall be borne by the customer requesting service.